



**Aldreds**  
Estate Agents



## 7 St Georges Court

Deneside, Great Yarmouth, NR30 2PY

Offers Around £79,000



Situated in Central Great Yarmouth in a convenient location for St Georges Park and Theatre, we are pleased to offer this rare opportunity to acquire a ground floor flat in this modern complex for occupation by the over 55's. The property has pleasant views to the rear on to the communal garden. The property offers the benefits of a spacious lounge, kitchen, two bedrooms and re-furnished shower room. Night storage heating and pvc double glazing. Communal parking. The property offers a communal lounge, laundry facilities and two guest rooms available for visitors. Carpets as fitted are included in the asking price. The property is offered with no upward chain.





Common Entrance Hall

With security entry phone and lift service to upper floors.

Entrance Hall

Wood panel entrance door, security entry phone, double width cloaks cupboard, airing cupboard housing the hot water cylinder, doors leading off to:

Living Room 14'9" x 10'5" (4.52 x 3.20)

Double glazed window providing views over the communal garden area, tv point, telephone point, electric fire, open access to:

Kitchen 7'1" x 5'4" (2.18 x 1.65 )

Fitted wall and base units with work surface over, part tiled walls, recess with electric cooker point, single drainer stainless steel sink unit, recess with space for fridge, double glazed window to side aspect, wall mounted fan heater, part tiled walls.

Bedroom 1 12'5" x 8'7" (3.81 x 2.62 )

Plus recess with space for a wardrobe, night storage heater, double glazed window to rear aspect, tv point.

Bedroom 2 14'11" x 6'5" (4.55 x 1.98)

Velux double glazed window, electric panel heater.

Shower Room

Re-furbished with a double width aqua panelled shower cubicle with electric shower fitting, bidet low level wc, vanity unit with inset wash basin, aqua panelled walls, electric fan heater, extractor fan, vinyl flooring, chrome electric towel rail/radiator.

Outside

There are communal grounds and car parking. Within the main building is a residents laundry service and guests facilities.

Tenure

Leasehold. 125 years from 1st October 1987 with an annual service charge and ground rent payable.

Services

Mains water, electric, drainage.

Council Tax

Great Yarmouth Borough Council - Band 'B'

Location

Great Yarmouth is the largest resort on the East Norfolk coast with its Historic Market Place and varied selection of shops. The town has a busy port and the rivers Yare and Bure give access to the Norfolk Broads. There are Museums \* Race Course \* Greyhound Stadium \* Schools for all ages \* District Hospital approximately 5 miles south. Bus and rail services connect with Norwich.

Directions

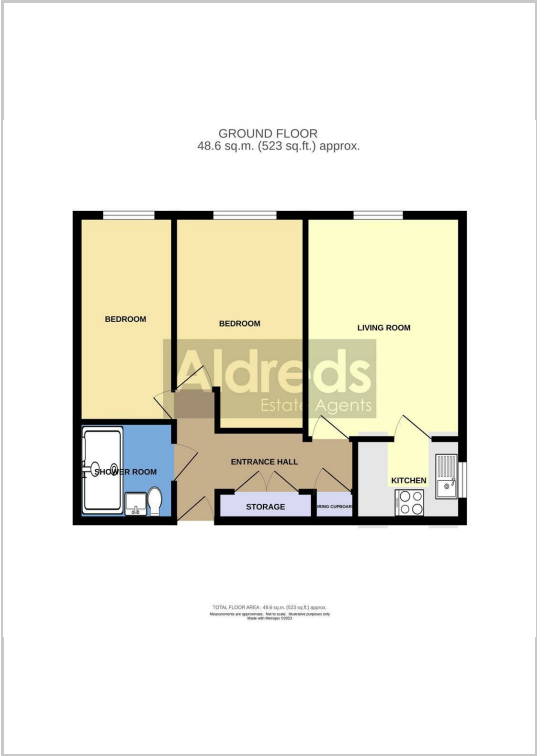
From the Yarmouth office head south along South Quay, turn left into Nottingham Way, turn right then immediately left into St Peters Road, turn left into Deneside where the property can be found on the right hand side.

Ref: Y11929/11/23/CF

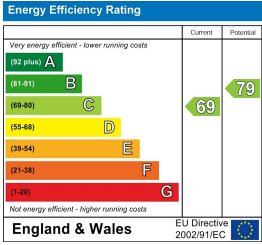
Area Map



Floor Plans



Energy Efficiency Graph



Disclaimer  
These particulars are issued on an understanding that all negotiations shall be conducted through Messrs. Aldreds. Please note: Messrs. Aldreds for themselves and for the vendors or lessors of this property whose agents they are given notice that: 1. Particulars are set out as a general outline only for guidance of intending purchasers or lessees, and do not constitute nor constitute part of, an offer or contract. 2. All descriptions, dimensions, references to condition and necessary permissions for use and occupation, and other details are given without responsibility and any intending purchasers or tenants should not rely on them as statements or representations of fact but must satisfy themselves by inspection or otherwise as to the correctness of each of them. 3. No person in the employment of Messrs. Aldreds has any authority to make or give any representation or warranty whatever in relation to this property. 4. If you are proposing to visit the property and are traveling some distance please check with Aldreds on the issue of availability prior to traveling. 5. Aldreds Property Consultants and associated services may offer additional services to the prospective purchaser for which they will be entitled to receive a commission. Aldreds are pleased to be working with Mortgage Advice Bureau. They're an award-winning mortgage broker with over 1,400 advisers across the UK, and have access to over 12,000 mortgage products from over 90 lenders. Aldreds Estate Agents Ltd receive a commission of £200 on each completed case. Your home may be repossessed if you do not keep up repayments on your mortgage. There may be a fee for mortgage advice. The actual amount you pay will depend upon your circumstances. The fee is up to 1%, but a typical fee is 0.3% of the amount borrowed. Mortgage Advice Bureau is a trading name of Mortgage Seeker Limited which is an appointed representative of Mortgage Advice Bureau Limited and Mortgage Advice Bureau (Derby) Limited which are authorised and regulated by the Financial Conduct Authority. Mortgage Seeker Limited Registered Office: Lovewell Blake, Sixty Six North Quay, Great Yarmouth, Norfolk, NR30 1HE. Registered in England Number: 372141. 6. Potential purchasers should check with their providers that the broadband and mobile phone coverage they would require is available.

17 Hall Quay, Great Yarmouth, Norfolk, NR30 1HJ  
Tel: 01493 844891 Email: yarmouth@aldreds.co.uk <https://www.aldreds.co.uk/>

Registered in England Reg. No. 08945751 Registered Office: 66 North Quay, Great Yarmouth, Norfolk NR30 1HE Directors: Mark Duffield B.S.c. FRICS. Dan Crawley MNAEA Paul Lambert MNAEA